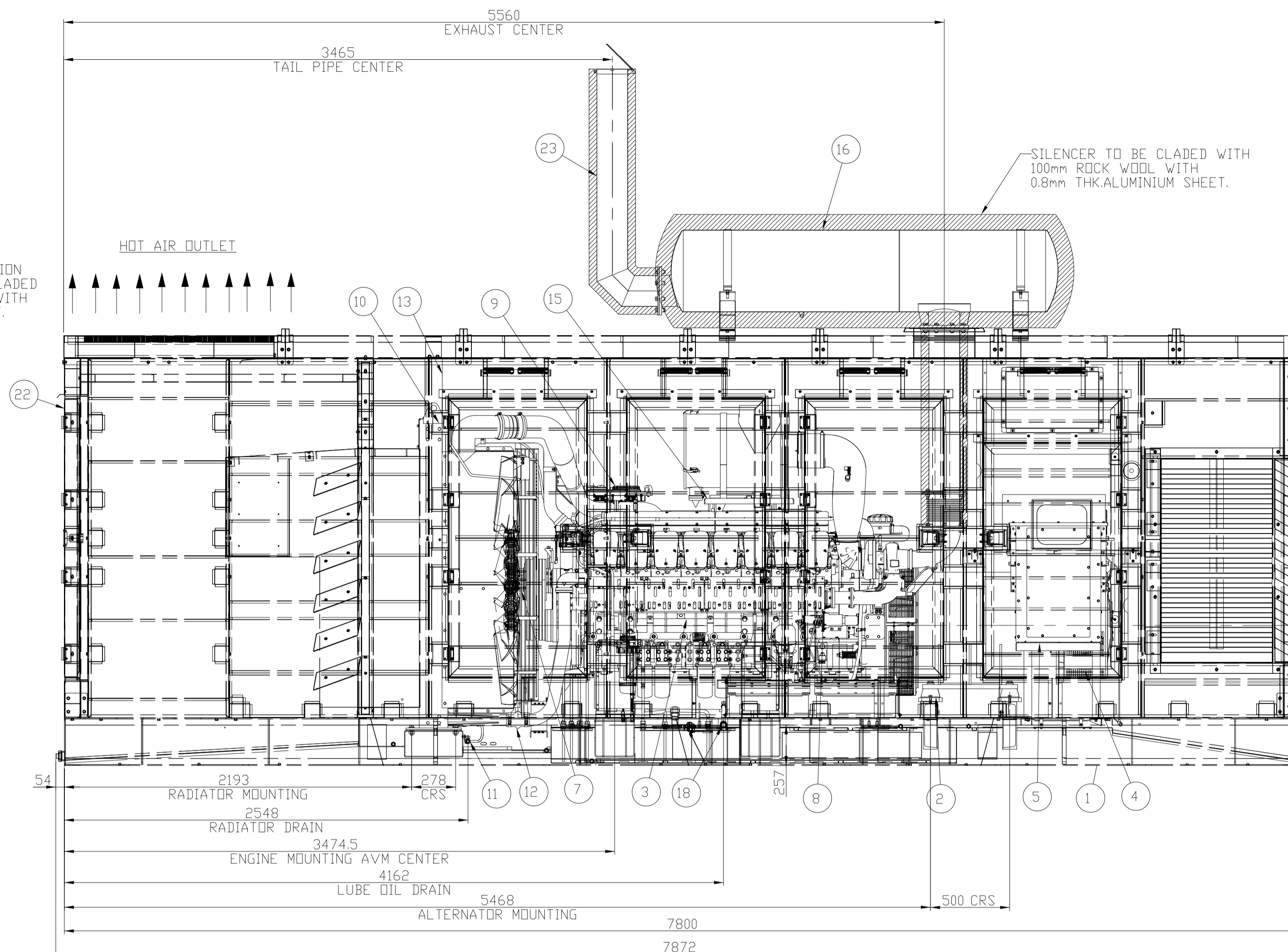
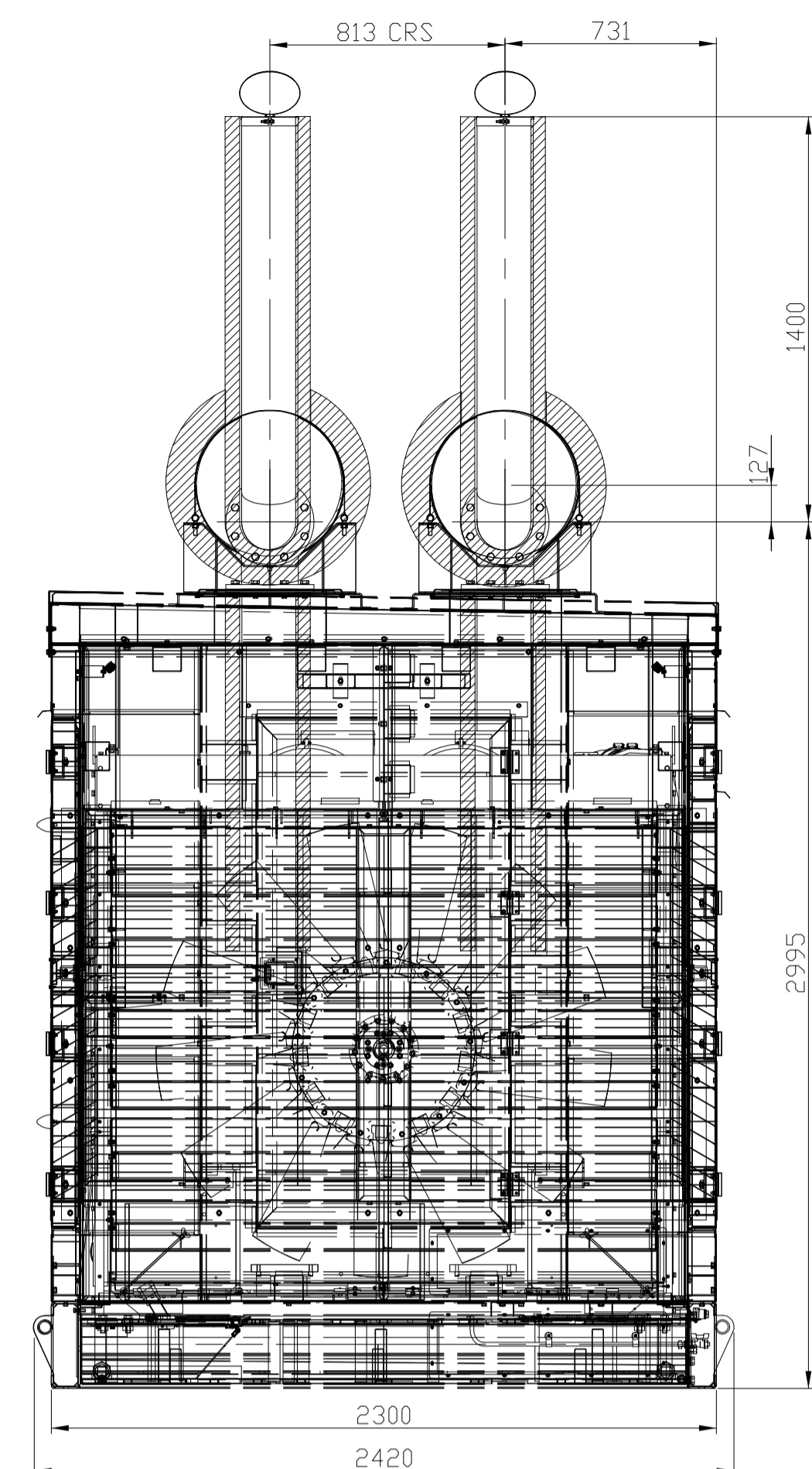


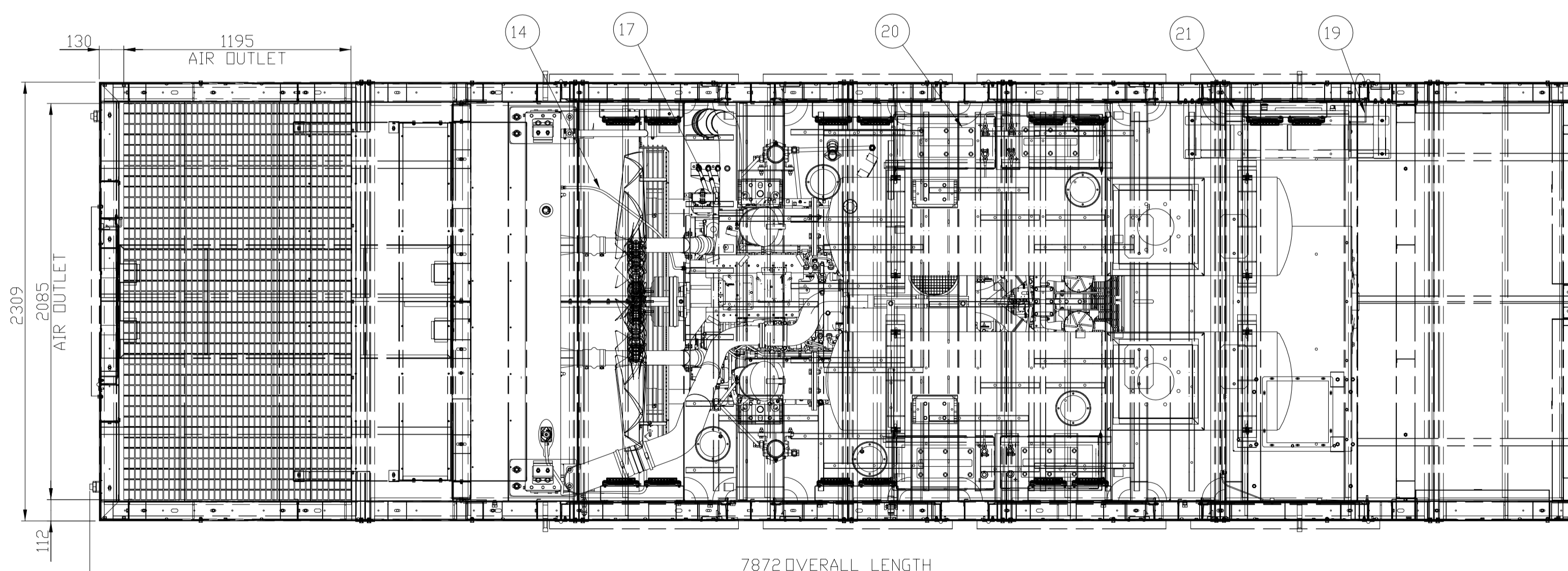
VIEW FROM BACK SIDE



VIEW FROM RIGHT VIEW



VIEW FROM FRONT SIDE



VIEW FROM TOP VIEW

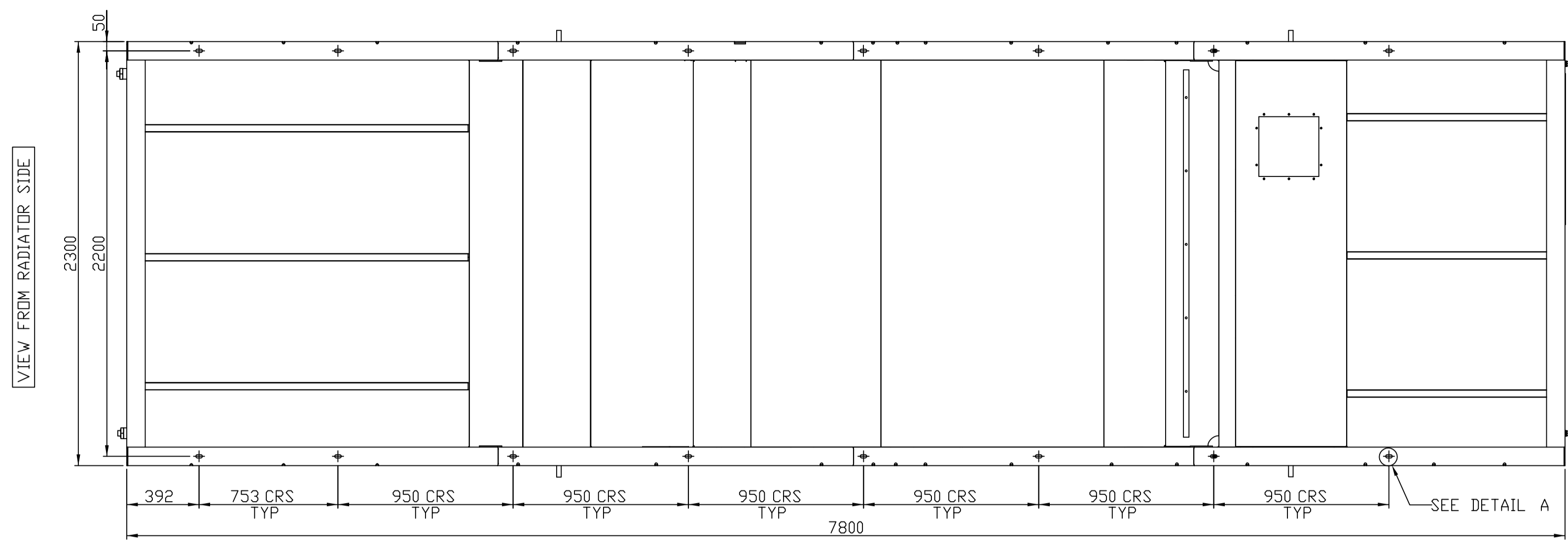
23	EXHAUST BEND
22	CANOPY ASSEMBLY
21	CONTROL PANEL
20	BATTERY & BATTERY CABLE
19	EARTHING CABLE
18	LUBE OIL DRAIN ARRANGEMENT
17	FUEL PIPING
16	EXHAUST SYSTEM
15	AIR CLEANER STAND
14	VENT PIPE FOR RADIATOR
13	STAY ARRANGEMENT
12	RADIATOR HOSES & HOSE CLIP
11	WATER DRAIN ASSEMBLY
10	RADIATOR ASSEMBLY
9	ECU MOUNTING
8	STARTER
7	FAN SPACER & MOUNTING
6	---
5	TERMINAL BOX
4	ALTERNATOR
3	DV12 ENGINE ASSEMBLY
2	AVM ASSEMBLY
1	BASE PLATE ASSEMBLY
SR.NO.	DESCRIPTION

- NOTES:-
 1. OUTER DIMENSION-7872(L)x2420(W)x3380(H)
 2. DOOR HINGES - OUTSIDE
 3. PAINT- POWDER COATING FOR ALL CANOPY PANELS KOEL GREEN (IVORY)
 CANOPY TOP,BASE,TANK PEPSI BLUE POWDER COATING
 4. ENSURE 15.5mm FAN TIP CLEARANCE FROM SHROUD DIAMETRICALLY
 5. FOR DETAILS OF FOUNDATION LAYOUT AND INSTALLATION PLAN FOR OPEN DOORS REFER SHEET 2 OF 3.
 6. FOR DETAILS OF AVM WITH BASE PLATE REFER SHEET 3 OF 3.

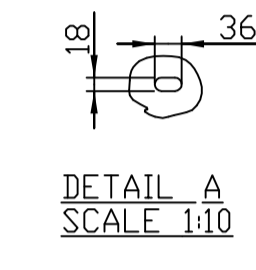
IF IN DOUBT ASK
 PRINTS OF PREVIOUS REVISION NO. SHOULD BE SCRAPPED

THIS DRAWING IS PROPERTY OF KIRLOSKAR OIL ENGINES LTD. AND MUST BE RETURNED ON REQUEST IF IT IS SUBMITTED AS CONFIDENTIAL INFORMATION WITH OUR ENQUIRY, TENDER, ORDER OR CONTRACT NO. IT IS NOT TO BE ISSUED FOR ANY OTHER PURPOSE OR ORDER NOR MAY BE COPIED OR LENT WITHOUT OUR AUTHORITY IN WRITING.
 FORMAT No:R&E/FORM/056/01 (REFER TOP No. R&E 4.4/03)

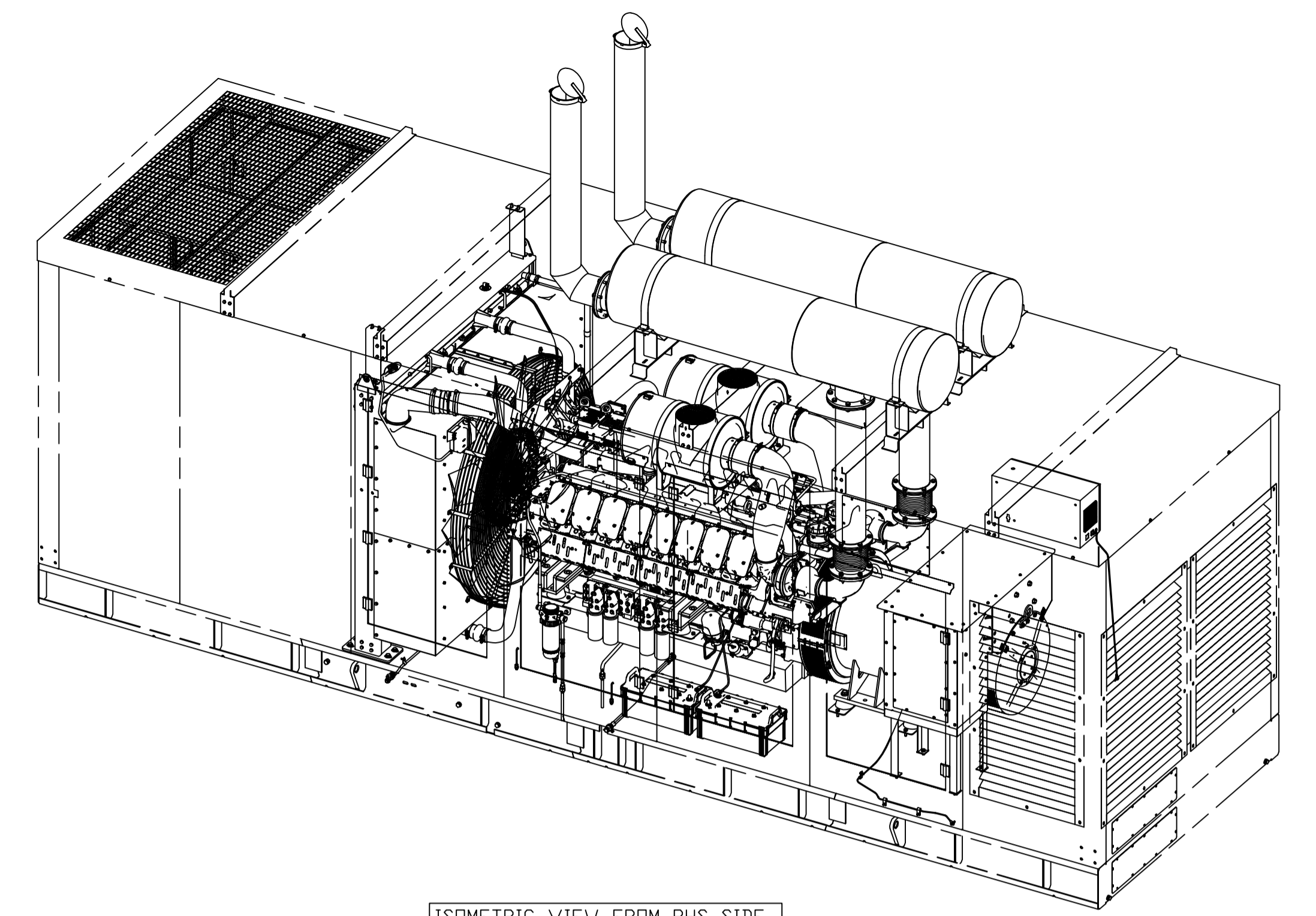
UNLESS OTHERWISE SPECIFIED ● ALL DIMENSIONS ARE IN mm. ● SURFACE ROUGHNESS AS PER CO. STD:ND1050L. ● UNMENTIONED TOLERANCES AS PER CO:STD:ND1000L. ● REMOVE ALL SHARP BURRS AND SHARP EDGES. ● DRAWING NOT TO BE SCALED.		CAD DRG FILE- PLM MATERIAL - -- HEAT TREATMENT - -- WEIGHT (kg) - -- DRN DAVINCI/NBK TITLE CHD. KSP APPD. KSP DATE 20/02/16		CASTING/FORGING DRG. NO. --- TYPE DV16 SCALE 1:20 SHT. NO 1 OF 3	
01 G.A UPDATION AS PER PROTO POINTS. 00 NEW RELEASE		DAVINCI NBR 05/08/16 20/02/16 REF. No. 20/02/16		DRAWING NO. D16.5101.00.00 REV. NO. 01	
KIRLOSKAR OIL ENGINES LTD., PUNE 411 003 (INDIA)					



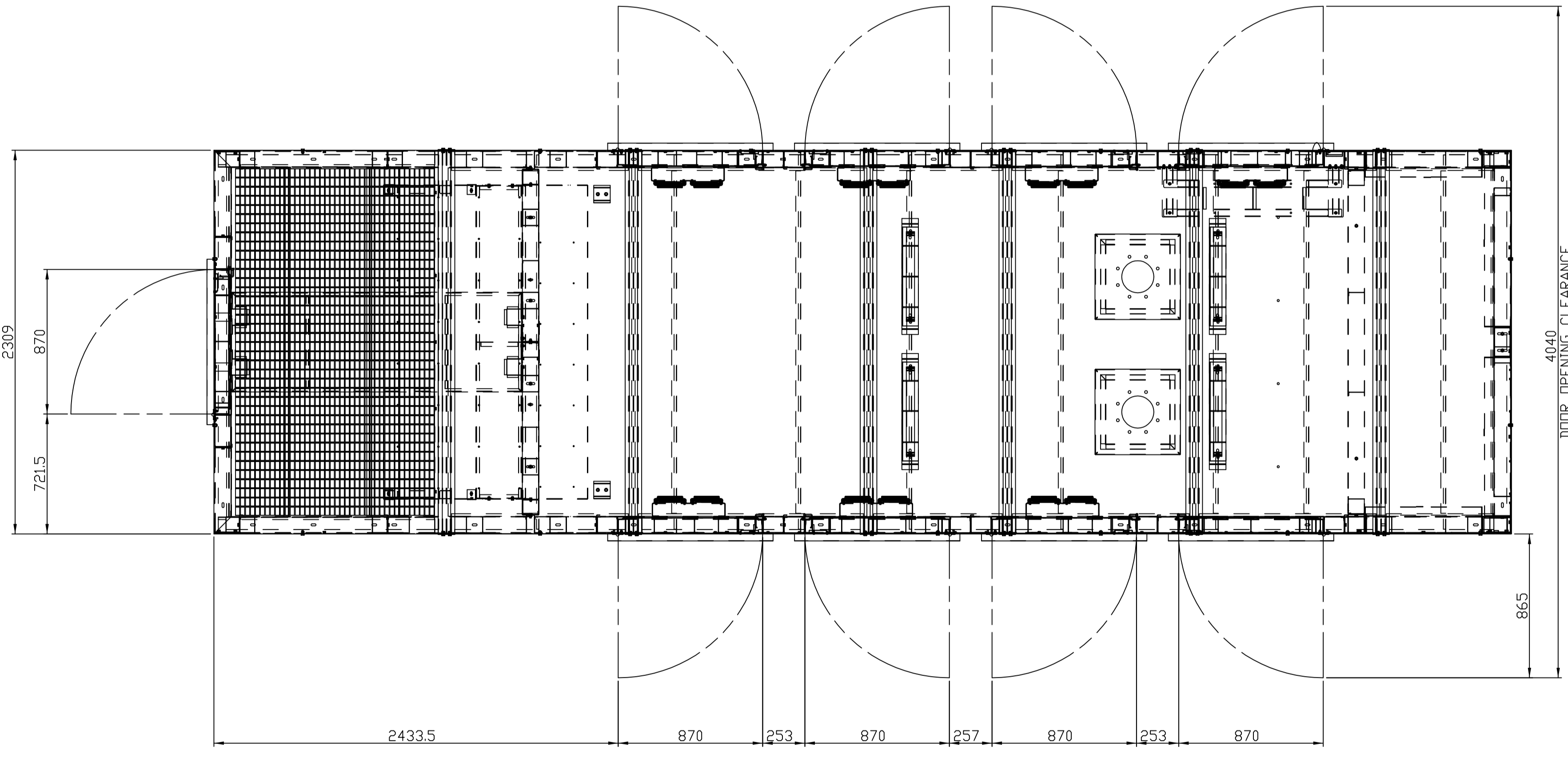
FOUNDATION LAYOUT



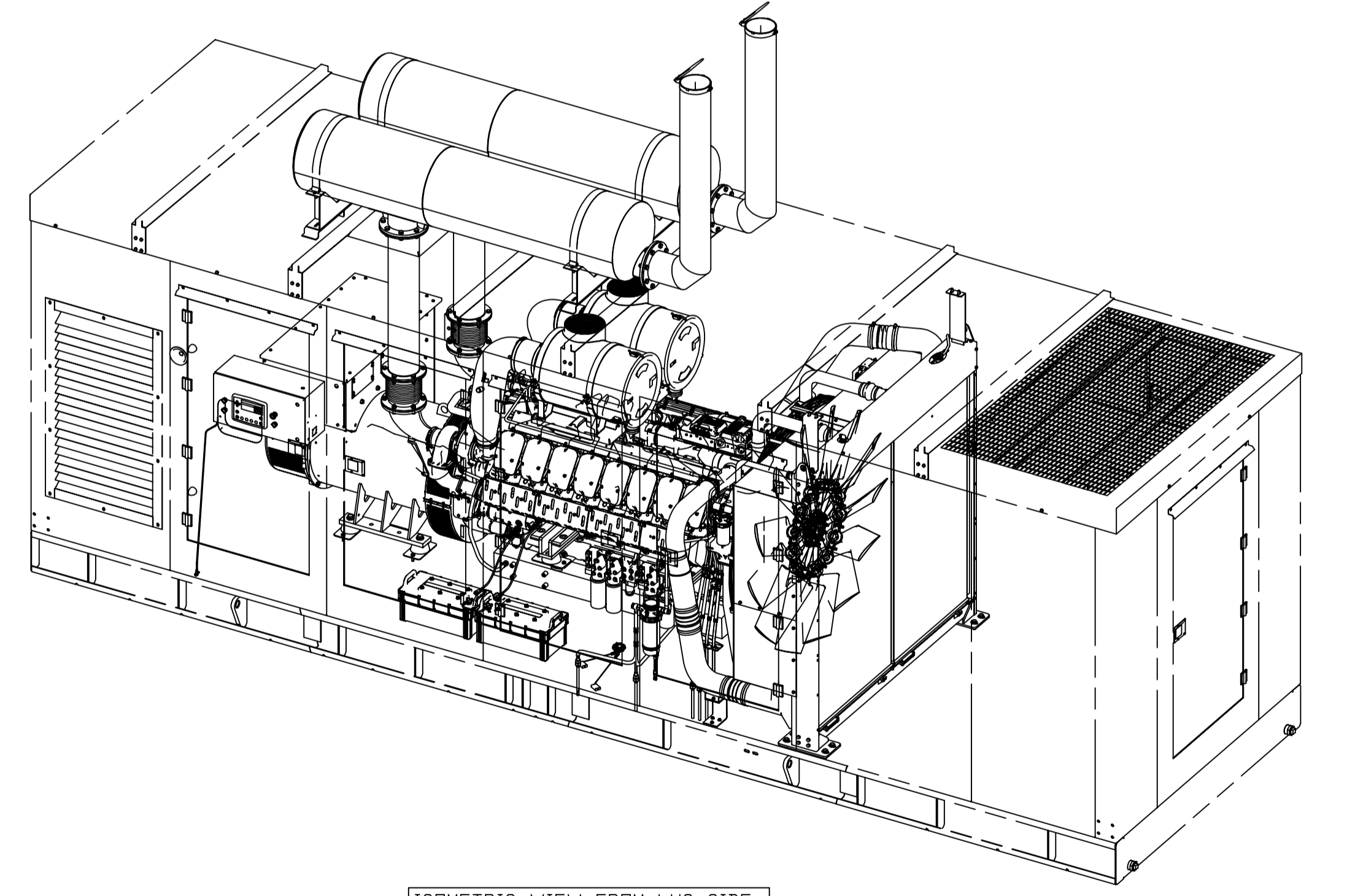
DETAIL A
SCALE 1:10



ISOMETRIC VIEW FROM RHS SIDE



INSTALLATION PLAN FOR OPEN DOOR



ISOMETRIC VIEW FROM LHS SIDE

IF IN DOUBT ASK

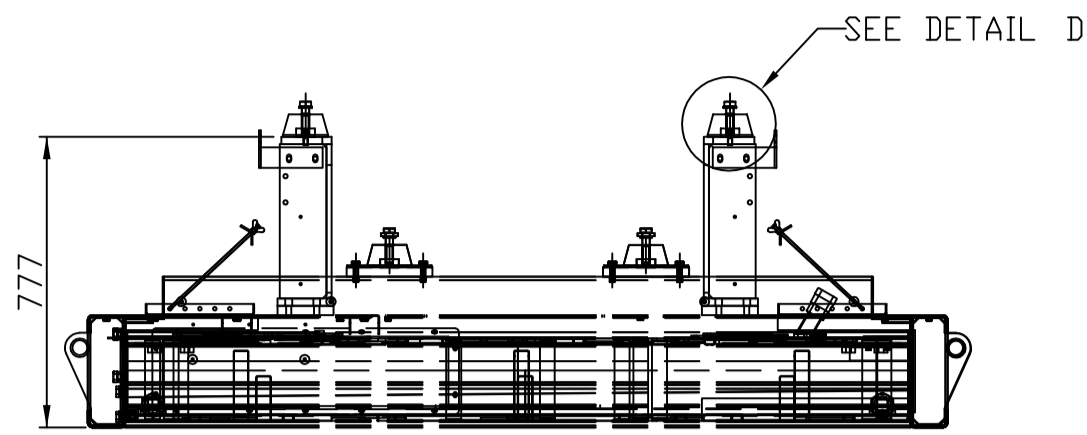
PRINTS OF PREVIOUS REVISION NO. SHOULD BE SCRAPPED

THIS DRAWING IS PROPERTY OF KIRLOSKAR OIL ENGINES LTD. AND MUST BE RETURNED ON REQUEST. IT IS SUBMITTED AS CONFIDENTIAL INFORMATION WITH OUR ENQUIRY, TENDER, ORDER OR CONTRACT NO. IT IS NOT TO BE ISSUED FOR ANY OTHER PURPOSE OR ORDER NOR MAY BE COPIED OR LENT WITHOUT OUR AUTHORITY IN WRITING.

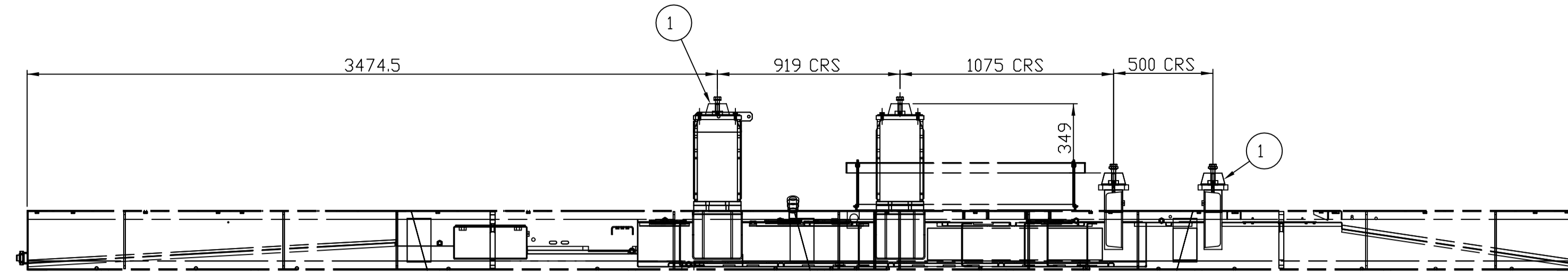
FORMAT No:R&E/FDRM/056/01 (REFER DDP No. R&E 4.4/03)

UNLESS OTHERWISE SPECIFIED		CAD DRG FILE:-		PLM		CASTING/FORGING DRG. NO.			
● ALL DIMENSIONS ARE IN mm. SURFACE ROUGHNESS AS PER CO. STD:1050L.		MATERIAL :-		HEAT TREATMENT :-		WEIGHT (kg) :-			
● UNMENTIONED TOLERANCES AS PER CO:STD:1050L.		DRN	DAVINCI/NBK	TITLE		TYPE			
● REMOVE ALL SHARP BURRS AND SHARP EDGES.		CHD.	KSP	GENSET INSTALLATION		DV16			
● DRAWING NOT TO BE SCALED.		APPD.	KSP	FOR 1010kVA SILENT GENSET		SCALE 1:20			
UNMENTIONED		DATE	19/02/16	DRAWING NO.		SHT. NO. 2 OF 3			
RADI				KIRLOSKAR OIL ENGINES LTD.,		REV. NO.			
CHAMFER				PUNE 411 003 (INDIA)		01			
UNDERCUT				D16.5101.00.00					
No.	REVISION	ZONE	MODIFIED BY	REF. No.	No.	REVISION	ZONE	MODIFIED BY	DATE
01	G.A MODIFIED AS PER PRDCT POINTS		DAVINCI/NBK		00	NEW RELEASE			

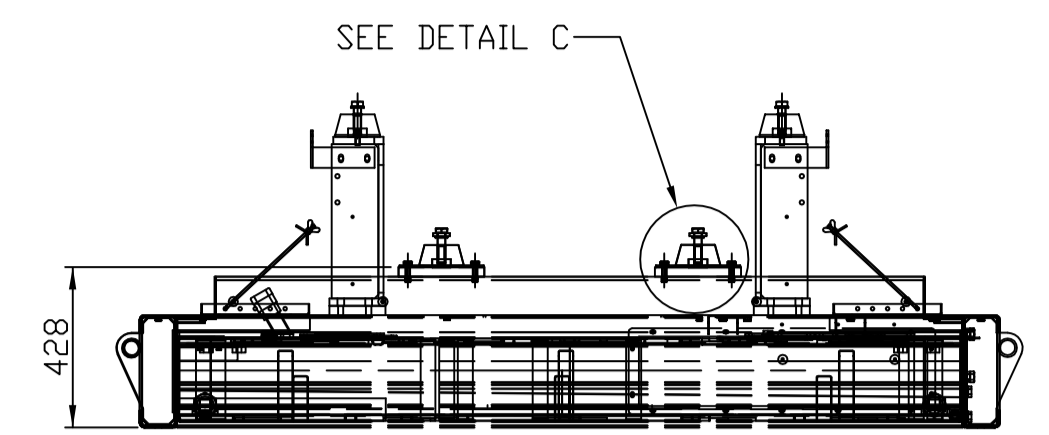
LIFECYCLE STATE:- RELEASED



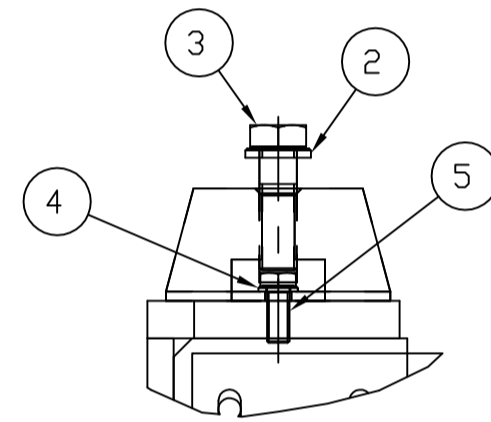
VIEW FROM BACK SIDE



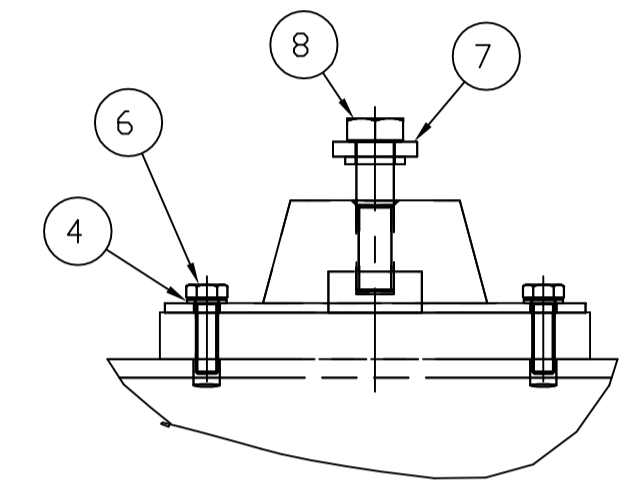
VIEW FROM RIGHT SIDE



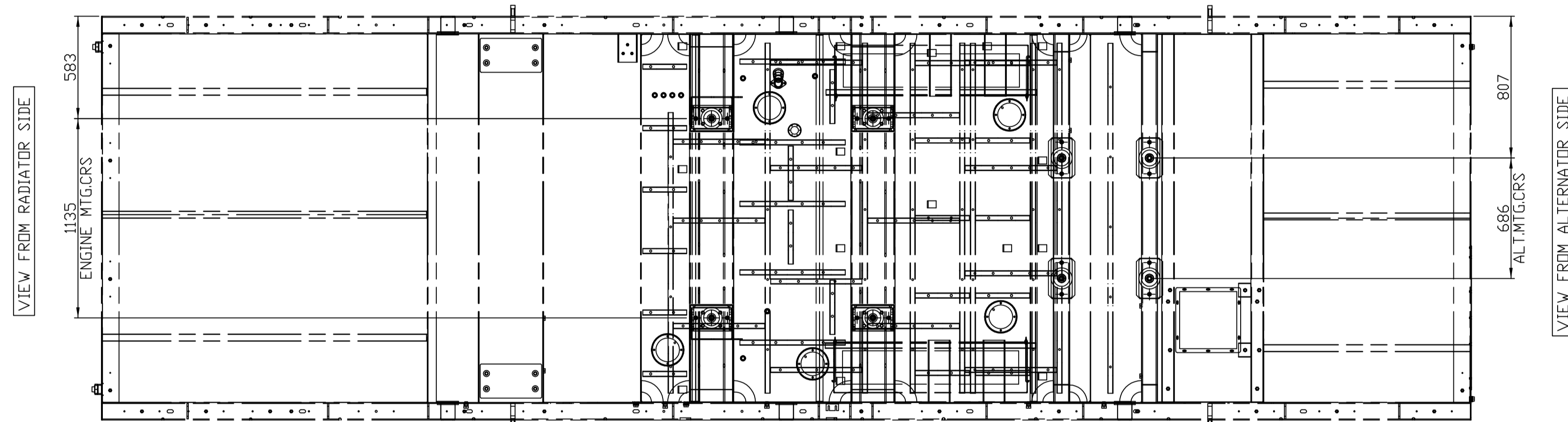
VIEW FROM FRONT SIDE



DETAIL D
SCALE 1:4



DETAIL C
SCALE 1:4



VIEW FROM TOP SIDE

VIEW FROM ALTERNATOR SIDE

VIEW FROM RADIATOR SIDE

SR.NO.	DESCRIPTION	KDEL PART NO.	QTY.
8	SET BOLT-M20X2.5X80-8.8	50.002.20.080.	4
7	SPECIAL WASHER FOR ALTERNATOR MTG	KV8.504.04.0.PR	4
6	SET SCREW-M12X1.75X40-8.8	50.003.12.040.	8
5	SET SCREW-M12X1.75X30-8.8	50.003.12.030.	8
4	PLAIN MACHINED WASHER-M12	50.506.12.000.	16
3	SET SCREW-M20X2.5X65-10.9	50.002.20.065.	4
2	HARD WASHER(FOR M20 BOLT)	F6.811.02.0.00	4
1	ANTIVIBRATION MOUNTING	D16.061.06.0.PR	8
	DESCRIPTION	KDEL PART NO.	QTY.

NOTES:-
 * AVM DEFLECTIONS TO BE MEASURED:
 A) EXPECTED DEFLECTION ENGINE AVM 3.5MM
 B) EXPECTED DEFLECTION ALTERNATOR SIDE AVM 3.5MM.

IF IN DOUBT ASK

PRINTS OF PREVIOUS REVISION NO. SHOULD BE SCRAPPED

THIS DRAWING IS PROPERTY OF KIRLOSKAR OIL ENGINES LTD. AND MUST BE RETURNED ON REQUEST IF IT IS SUBMITTED AS CONFIDENTIAL INFORMATION WITH OUR ENQUIRY, TENDER, ORDER OR CONTRACT NO. IT IS NOT TO BE ISSUED FOR ANY OTHER PURPOSE OR ORDER NOR MAY BE COPIED OR LENT WITHOUT OUR AUTHORITY IN WRITING.

FORMAT No:R&E/FDRM/056/01 (REFER DDP No. R&E 4.4/03)

REVISION		ZONE	MODIFIED BY	DATE	REVISION		ZONE	MODIFIED BY	DATE	DRAWING NO.		REV. NO.
01	REFER SHEET NO.1 OF 3.		DAVINCI	27/04/16						D16.5101.00.00		01
00	NEW RELEASE		KSP	28/02/16						DRAWING NO.		01

UNLESS OTHERWISE SPECIFIED		CAD DRG FILE-		PLM		CASTING/FORGING DRG. NO.	
● ALL DIMENSIONS ARE IN mm. SURFACE ROUGHNESS AS PER CD. STD:10/AS1050.		MATERIAL :-		HEAT TREATMENT :-		WEIGHT (kg) :-	
● UNMENTIONED TOLERANCES AS PER COSTING/1000.		DRN DAVINCI/NBK		TITLE		TYPE DV16	
● REMOVE ALL SHARP BURRS AND SHARP EDGES.		CHD. KSP		GENSET INSTALLATION FOR		SCALE 1:20	
● DRAWING NOT TO BE SCALED.		APPD. KSP		1010kVA SILENT GENSET		SHT. NO 3 OF 3	
UNMENTIONED		DATE 22/02/16		KIRLOSKAR OIL ENGINES LTD., PUNE 411 003 (INDIA)		DRAWING NO. D16.5101.00.00	
RADI							
CHAMFER							
UNDERCUT							

LIFECYCLE STATE:- RELEASED